



## Riess Celebrates 8th Year In Business !!



October 1, 2005 marked the Anniversary of Riess Construction, LLC. It was 8 years ago that the three Riess brothers began their own business "Riess Construction". If you spend any amount of time with the brothers they will certainly entertain you with stories that made them who they are today. They take pride in every job they do, beginning with the very first one 8 years ago, building a deck for a friend of the family. Over the years the jobs have gotten a bit bigger but their quality and commitment stays strong. As an employee of Riess I look forward to many more years.

**Happy Anniversary !!**



### Meredith Community Center

Riess Construction can currently be found working on the construction of the New Community Center at One Circle Drive in Meredith, NH. Riess's commercial wood framing division was pleased to be awarded the framing package for this project. Working closely with BAUEN Corporation, the local Construction Manager and local Architect,



Christopher P. Williams, Riess intends to complete its portion of the project by mid November. The overall completion of the project is slated for January 2006. The town of Meredith has been waiting for over 50 years for this facility. This building is a multi-



generational center; the kitchen will provide meals for the local senior citizens as well as the Meals On Wheels Program. The center will also serve as the town's emergency management shelter.

### F.W. Webb, Gilford NH



October 7, 2005 Riess Construction attended the Ribbon Cutting Ceremony for F.W. Webb Laconia / Gilford. Riess had recently completed their portion of the project for the new F.W. Webb warehouse and distribution center. This is the first new building in the Lakes Business Park located on Hounsell Avenue.



This project allowed Riess the opportunity to work with Dutton & Garfield who supplied the 30,000 sq ft pre-engineered metal building and also JM Coull the General Contractor of the entire project. All aspects of this project worked out well and the project was completed on time.

## The Oliver Store Lancaster, New Hampshire



According to John Scales, “The new construction has nearly doubled the size of The Oliver Stores’ facility adding on 3,500 sq ft of service capacity, primarily for timber harvesting equipment at the rear of the building”.



Recently completed is a 3,500 sq ft pre-engineered metal building addition for The Oliver Stores at their Lancaster, NH facility. Working closely with Part Owner and Branch Manager, John Scales, Riess was responsible for the design, supply and erection of the new addition that will house a wash bay, a drive thru mechanics bay and a 5-ton running bridge crane.



Pat Riess is in the middle of his two year term with the MBCEA as acting President. He recently attended a meeting in Boylson, MA and is planning for the upcoming meeting which will be located in Portland, Maine on November 17th. Pat is always looking for new information and ideas. If you are interested in attending or joining the MBCEA please contact him at 603-536-7756.

### **Riess Construction Is Proud To Announce The Newest Addition To Their Equipment Fleet..... 1990 Grove 40-Ton Hydraulic Truck Crane**

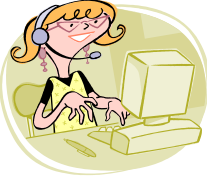


In August 2005 Riess added to their ever increasing equipment fleet by purchasing a 40 ton Hydraulic Truck Crane. It did not take long for Riess to get their newest member to work. Our crane has made its way to several job sites already. The Wood Crew was the first to utilize the crane setting trusses at the Meredith Community Center, then the Steel Crew put it to use at the Cummings Printing project in Hooksett, NH.

.....

Riess has re-hired Ryan Devine. He had previously worked for our Steel Crew and has now returned to us with his Tractor Trailer License. Ryan has become our primary TT Driver and spends the majority of his days transporting our equipment to and from the job sites.

### **Riess Welcomes Cheryl Paskavitch**



In September Cheryl joined Riess as a new part time receptionist. Cheryl and her husband recently retired in the Plymouth area— transplants from Somerset, MA.



Arriving late in the fall will be the new Riess Construction Web Site. When you have a moment please check out our new and improved web site at [www.riessconst.com](http://www.riessconst.com). Andy at Venture Print Unlimited, located in Plymouth, NH has been working long and hard this summer and has updated our web site with new information and pictures.

[www.riessconst.com](http://www.riessconst.com)

### **New Hampshire Electric Co-Op Ossipee, New Hampshire**

The finishing touches are being completed on the newly renovated vehicle storage building of the New Hampshire Electric Co-op in Ossipee, New Hampshire.

The Ossipee location was way over-due for a modernization and over haul of this facility. Riess worked closely with one of the NH Electric Co-op' senior engineer's Dave Horton in the design and construction of this new vehicle storage building. The addition adds 4,600 sq ft of space and workers hope to occupy the building by the end of the month.



**Safety Training Day  
June 3, 2005**

On June 3rd we held a company wide Safety Training Day. We had scheduled a couple of agencies to come in and speak with all of us:

- Tim Freese, Acadia Insurance- Defensive Driving
- Construction Equipment Specialists- Forklift and Scissor lift Training
- Rob Riess, Harness Inspections

We concluded our safety meeting around 3:00 so all the employees would have enough time to pick up their families and meet us in Manchester to conclude our day with a Fisher Cats game. This was the first time many of the employees had seen the new baseball stadium. A good time was had by all!



Phone: 603.536.7756

Fax: 603-536-7757

E-mail: [info@riessconst.com](mailto:info@riessconst.com)

[www.riessconst.com](http://www.riessconst.com)

#### *Note From Pat.....*

We had an extremely busy and hot summer, from Lancaster to Ossipee, and Laconia to Meredith. Central NH still is the backbone of our business and where most of our projects are located.

With the purchase of our own crane, safety and productivity can now be achieved simultaneously. By adding Cheryl to our staff Lori will be able to take over more management duties and delegate some of the day to day duties to Cheryl.

With some upgrading to the office infrastructure by way of our new phone system to enhance our voice mail capabilities, better information flow has been achieved. A badly-needed copier upgrade was also accomplished.

Talk to you in the spring...and have a great holiday season!!

### **Riess Construction, LLC**

**11 Lovejoy Road**

**Plymouth, NH 03264**

#### ***Safety Pays Program***

October 1st brought a fifth installment of the "Safety Pays" program. Riess employees successfully completed the 3rd Quarter of 2005 with no "Loss of Time Injuries". This was quite the milestone for Riess and their employees, June 2005 marked two years since Riess Construction has had a Loss Time Injury. Riess has brought Safety to the forefront of their company, striving to educate themselves as well as their employees.

#### ***Riess Happenings***

This Fall marks some big Anniversaries with a few members of the Riess Construction.

- October 16th~**Chalie Kartakosol's** 5th Year
- October 18th~**Sam Comeau's** 6th Year
- October 25th~**Eric Ballards's** 1st Year
- November 4th~**Lori Cooper's** 3rd year
- December 14th~**Arnie Poitras's** 7th Year